

CABLE 172 RF: RF CABLE ASSEMBLY, IPEX MHF PLUG + RP SMA STRAIGHT PLUG + 1.13MM CABLE

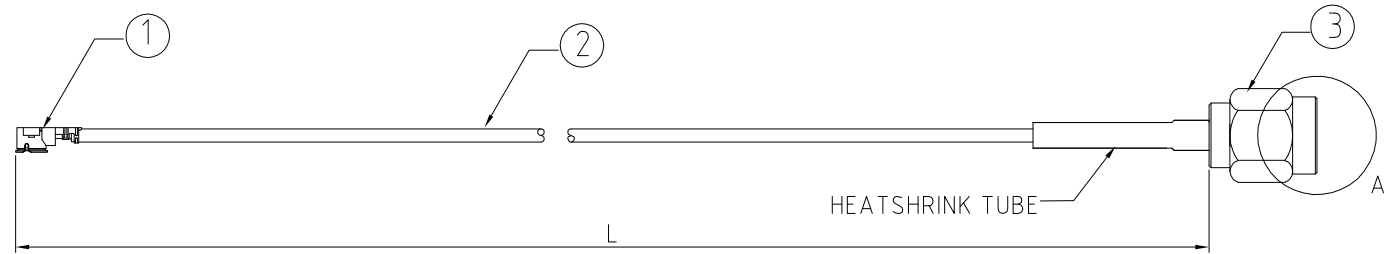
SPECIFICATIONS:

1. I-PEX MHF PLUG (20278-112R-13).
2. ϕ 1.13MM COAXIAL CABLE, COLOR: GRAY.
3. RP SMA ST PLUG (C19AA31113004), GOLD

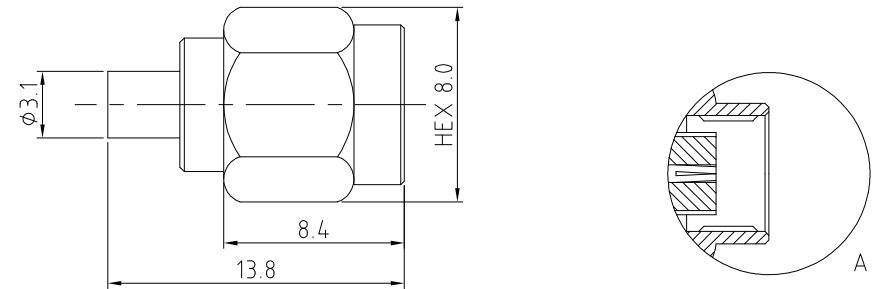
USAGE PRECAUTIONS: CABLES USING 'MICRO' COAX ARE DELICATE:
 (i) HANDLE WITH CARE.
 (ii) DO NOT TWIST; APPLY EXCESSIVE FORCES OR SHARP BENDS TO THE CABLE. DO NOT FORCEFULLY DEFORM WIRES.
 (iii) CONSULT CONNECTOR MANUFACTURER'S DATASHEETS FOR DETAILED NOTES ON HANDLING INSTRUCTIONS.

NOTES:

1. WORKING FREQUENCY RANGE: DC - 6GHz.



HOW TO ORDER
 CABLE 172 RF - XXXX - 1
 "L" LENGTH IN MM CABLE SIZE OPTIONS:
 eg: 100MM = 0100 1 = ϕ 1.13MM CABLE, COLOR: GRAY
 (MIN. = 0050, MAX. = 2000)
 STANDARD = 0100, 0150, 0200)
 Tolerance: <50mm : \pm 2mm.
 51-200mm: \pm 5mm.
 201-500mm: \pm 7mm.
 >501mm: \pm 10mm.



SMA DETAIL DRAWING

REV. DATE & DRN
 10 30/04/14 - NYW RELEASE

Scale: NTS	THIRD ANGLE	Unstated X .XX .XXX ANGLES	Tolerances: \pm 0.2 \pm 0.1 \pm 0.05 \pm 5	Material SEE NOTE
Drawn: NYW				
App'd: XXX	Title: CABLE ASSEMBLY	NOT TO SCALE		
Date: 30 APR. '14	Revision: 1.0	Unit: mm		



www.gradconn.com

© THIS DRAWING IS CONFIDENTIAL AND MUST NOT BE COPIED OR DISCLOSED WITHOUT WRITTEN CONSENT

Type: Cable 172 RF
CABLE 172 RF
Drawing Number:
Sheet 1 of 1
Drawing © E and O E